



Lisbon High School

2 Sugg Drive, Lisbon Falls, Maine 04252
(207) 353-3030 FAX (207) 353-7908
www.union30.org

Kenneth J. Healey, Principal
Warren G. Galway, Assistant Principal
Jeffrey S. Ramich, Co-Curricular Director

Patti Mucenski, Guidance Counselor
Edward Nunery, Guidance Counselor

May 15, 2009

Dr. Pamela Gray-Bennett, Director
New England Association of School and Colleges Inc.
Commission on Public Secondary Schools
209 Burlington Road
Bedford, Massachusetts 01730-1433

Dear Dr. Gray-Bennett:

This letter is in response to your April 14, 2009 letter that notified Lisbon High School of the Commission's intent of adverse action against the high school's accreditation status. The high school was informed that the Commission would be considering reducing our status from warning to probation when they convene for their next meeting on June 23-24, 2009. It is Lisbon High School's intention to submit this "Show Cause Response" to the Commission in hopes they will delay any adverse action in order for us to have additional time to implement and complete our new alternative facility improvement plan.

There are many reasons why we would like the Commission to consider a delay when they review this matter in June 2009. As you are aware the most recent attempt at obtaining funding to make significant improvements to the high school was a local referendum vote for \$500K. This referendum was supposed to determine whether to rebuild or renovate the high school and then design an appropriate solution. This referendum was defeated 902-468, an almost 2-1 margin, on April 21, 2009. Feedback from the community indicated that the voting public felt that the expenditure of \$500K for analysis and design work was too expensive and not a good use of taxpayer's money.

As you can imagine, the educational community of Lisbon has done some real scrambling over the last couple of weeks to create an alternative plan. This plan needs to be acceptable to taxpayers but also comprehensively address the significant NEASC concerns about how the facility negatively impacts the teaching and learning at Lisbon High School. Similar to the effort last year to add a permanent structural addition to the high school, the Lisbon School Department has proposed to the School Committee and Town Council a larger and more comprehensive addition (see rough attached drawing) to solve long term concerns about inadequate classroom space at the high school.

HOME OF SCHOLARS AND CHAMPIONS

NEW ENGLAND
ASSOCIATION
OF SCHOOLS
AND COLLEGES
FOUNDED IN 1885



The proposed addition will include five standard size classrooms and one enlarged classroom for the school's music program. This addition will protect students and computer equipment from the weather and will give each teacher a classroom they can call their own. The music room will be soundproofed and their music will no longer distract students in other classrooms.

This Lisbon High School addition does come at a cost to the school district's programs and equipment but not to the high school's programs and equipment (see attached cut proposal documents). The proposed high school addition has been developed by a facilities committee and has met with high praise by the School Committee and many other town officials. If both the School Committee and the Town Council approve the addition to the high school, the taxpayers of Lisbon will still need to approve the addition in a referendum vote schedule for July 2009. The completion time line for the proposed high school addition is to have the project complete in the early part of next school year.

The following list of NEASC concerns will be addressed or have already been addressed:

Gym Floor - Will fill in all gym floor cracks with resin and sand them level (over the summer).

Communications in Boy's Locker Room - Ordered new speaker (will install upon delivery).

Exhaust Fumes in Girls Locker Room - Permanently relocated the school bus to another location (done).

Heat in the Male PE Teacher's Office - Replaced the old heater with a new heater (done).

Unsafe use of Multiple Portable Propane Burners - Propane gas will be piped into the science classrooms from overhead, stopping the use of portable propane burners (will be complete by June 30, 2009).

Absence of the Restroom Doors - The restroom doors have been off the student bathroom for many years. The school believes that there is no issue of privacy because none of the bathroom toilet facilities are in view of the public. Additionally, the absence of restroom doors has virtually eliminated smoking and assaultive behavior in the school's bathroom. Lisbon High School would like to challenge this NEASC finding because we feel that having the doors off, although a bit unusual, is an accepted cultural practice and creates a much safer school environment on a daily basis.

Running water in art room - A plumber has been contracted and will install a clay trap in the art rooms sink eliminating the sink drainage problem (done by the end of next week).

Extreme Temperature Fluctuation – The school district has hired a new heating contractor “Siemens” and they have already brought the heat in the gym and art room under control (They will continue to work on the rest of the school next year).

Hot Plate in Science Labs that Result in Blown Fuses – Will add another electrical circuit to the science wing (over the summer).

Old Fashion Radiators – Will construct protection covers for each old fashion radiator that the public comes in contact with (before the end of the school year).

Water Stained Ceiling Tiles – Are being replaced as needed.

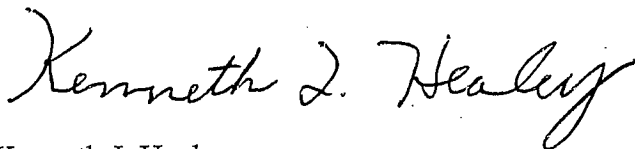
I hope the Commission can see from the above list of actions and planned actions that a lot of thought has been put into addressing the NEASC concerns. We would ask that the Commission please delay any adverse action on Lisbon High School’s accreditation status until after the required September 1, 2009 Special Progress Report is submitted. This adverse action delay will allow for the Lisbon School District to know whether the taxpayers are willing to go forward with the high school addition.

We feel a new addition will demonstrate a “good faith” and more importantly a funded effort to make Lisbon High School’s facility better. We hope our planned improvements will be viewed as positive steps toward having a facility that would fully “support and enhance teaching and learning” and that our accreditation status should not change, and may be improved, because of these efforts.

Please note that an upcoming substantive change will take place on July 1, 2009 that will affect Lisbon High School. Dr. Shannon Welsh will be leaving and Mr. Richard Green has been named the Interim Superintendent for the 2009-2010 school year. We will miss Dr. Welsh and her support but look forward to the leadership Mr. Green will bring to the school district.

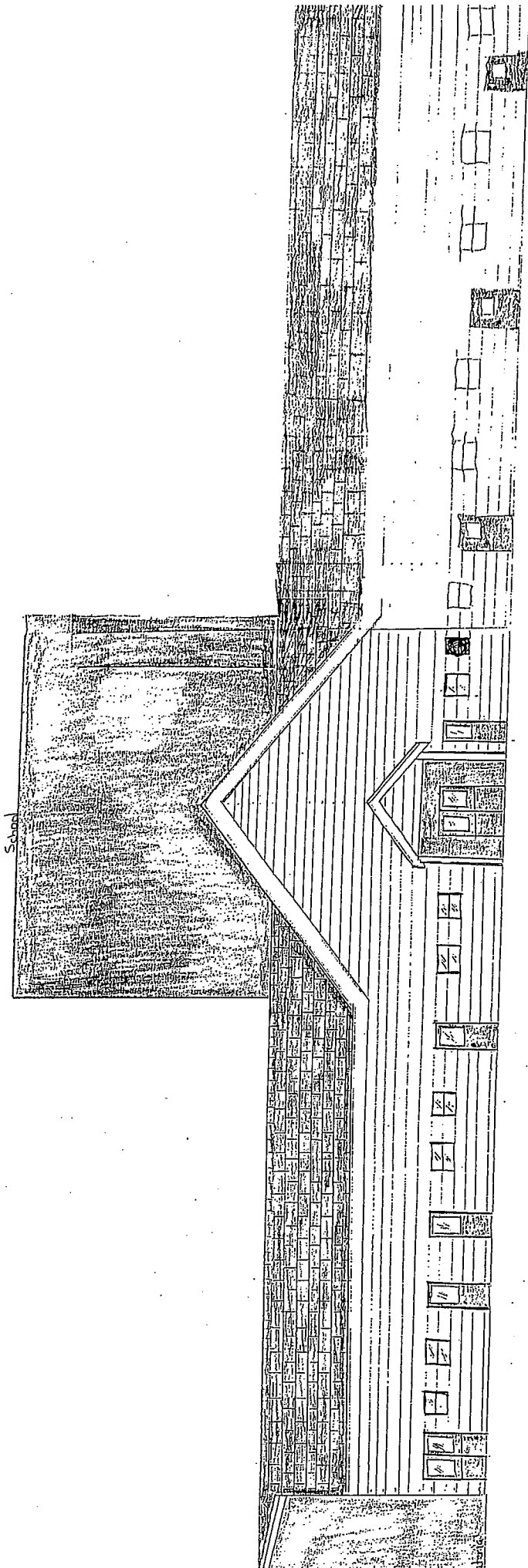
If you have any questions about this “Show Cause Response” letter please do not hesitate to contact me at Lisbon High School via email khealey@union30.org or call (207) 353-3030 extension number 2005.

Sincerely,



Kenneth J. Healey
Principal

Cc: Dr. Shannon Welsh, Superintendent, Lisbon School Department
Mr. Richard Green, 2009-2010 Interim Superintendent, Lisbon School Department
Ms Prudence Grant, Chair, Lisbon School Committee



NOT TO SCALE

LHS Modular Estimated Cost

<u>Company</u>	<u>Contract</u>	<u>Cost</u>
FCI Construction	Framing, groundwork, ramps, siding, roofing, interior walls, flooring, and doors. All work except: electrical, heating/plumbing, sprinklers & permits. Frost Wall and Footer with rebar	\$ 207,607
Downeast Energy	Heating units and propane tanks.	\$ 13,000
Curtis Electric	Lighting, Power, Fire, Security, and Phones	\$ 19,000
Permits	Electrical (.05/sq. ft.), building (n/c) and Handicap (\$25.00) All pending State Inspection	\$ 393
High Tech Sprinkler	Fire Sprinkler System	\$ 15,000
Total		<u>\$ 275,000</u>

State Fiscal Stabilization Funds
2008-2009
Fund 020

November Curtailment to be paid back by State Fiscal Stabilization Funds from the American Recovery and Reinvestment Act	<u>\$134,508</u>
New vs. Reno Analysis	\$20,000
Re-pipe propane for two rooms	\$10,000
Add water, 3 to 4 sinks, and cabinets to change room from Social Studies to Science.	\$6,000
Furniture for additional Science Room	\$10,000
Engineering for LHS Addition. A large portion of the work is being donated by an Alumnus.	\$3,000
Geo-technical work to test soil	\$3,000
Radiator Covers	\$1,000
Electric Meter and Pole to move bus parking area	\$2,000
Total	<u>\$55,000</u>
Amount available to be used in 09/10 for LHS Improvements	<u>\$79,508</u>

State Fiscal Stabilization Funds
2009-2010

2009/2010 Cuts made in order to pay for LHS Improvements

Guidance Counselor-Retiring	\$59,682
New Teaching position at LCS for anticipated enrollment increase.	\$55,345
Payment for Schiavi Modulars	\$25,200
Interest payment on failed \$500,000 bond	\$12,833
Bus Payment for new bus	\$26,938
Savings due to Administrators and Directors only getting a 1% increase in salaries	\$9,733
Total	<u>\$189,731</u>
Additional amount to be moved from 09/10 General Fund to SF SF monies in order to reach \$215,640 subsidy cut.	\$25,909
SF SF monies for 2009/2010	<u><u>\$215,640</u></u>